

Case Report

Case Report: Lupus Cerebritis Presenting As A Seizure In A Patient With Systemic Lupus Erythematosus.

Sa'ad Ismail Atawneh¹, Halima Malash², Hlayyel Nasasreh³, Lana Hasasna⁴, Mayar Al-Atawneh⁵, Moath Rushdi Atyani⁶.

1. Faculty of Medicine, Al Quds University Hebron – West Bank – Palestine, **Telephone** : +972 56-814-0162, **Email**: Atawnahsaed@gmail.com
2. Faculty of Medicine, Hebron University Hebron – West Bank – Palestine, **Telephone** : +972 568580022, **Email**: halima.malash@gmail.com
3. Faculty of Medicine, Hebron University, Hebron – West Bank – Palestine, **Telephone** : +972 56-991-8294, **Email**: dr.hlayyel.nasasreh@gmail.com
4. Faculty of Medicine, Hebron University, Hebron – West Bank – Palestine, **Telephone** : +972 59-246-8005, **Email**: lanahasasnah@gmail.com
5. Faculty of Medicine, Hebron University, Hebron – West Bank – Palestine, **Telephone** : +972 59-228-1384, **Email**: mayaratawneh4@gmail.com
6. Faculty of Medicine, Hebron University, Hebron – West Bank – Palestine, **Telephone** : +972 59-263-6387, **Email**: moathatiani@gmail.com

Abstract

Systemic lupus erythematosus (SLE) is a chronic multisystem autoimmune disorder diagnosed based on multiple clinical and serological criteria. According to the Systemic Lupus International Collaborating Clinics (SLICC), patients with SLE may have neuropsychiatric manifestations (NPSLE) that may indicate a severe form of the disease. These manifestations are often associated with high morbidity and mortality with a widely variable prevalence according to different series and are estimated to occur at ages between 37 and 95%.

In this paper, we present a rare and severe form of SLE in an adolescent female.

She was presented with neurological symptoms in the form of seizures and had good outcomes after being treated according to the guidelines.

INTRODUCTION

Systemic lupus erythematosus (SLE) is a multi-systemic disease of autoimmune underlying pathogenesis characterized by a wide variety of manifestations from mild mucocutaneous involvement to severe multi-organ affection, including renal, cardiac, musculoskeletal, and CNS disease³.

Despite the fact that it affects any system in the body, not all systems are affected in every patient since it occurs in different percentages. Constitutional symptoms are seen in more than 90% of patients with SLE, more than 80% for mucocutaneous and musculoskeletal involvement, 50% of patients have a hematologic manifestation in form of anemia of chronic disease and the most common neuropsychiatric demonstration is headache reported in more than 50% of cases, rather than seizures which are associated with disease activity and multiple other central and peripheral CNS manifestations.⁴

Multiple immune pathogenic pathways are involved in SLE development, in both the innate and the adaptive immunity.

Furthermore, there is an important role played by mitochondria and the production of multiple types of interferons with various pathogenic antibodies such as anti-nuclear antibody (ANA) and anti-double stranded DNA (anti-DsDNA) antibodies^{5,6}. Despite the advancement of recent technology, the exact mechanism of SLE is still not fully understood, making its diagnosis challenging.

Several diagnostic criteria have been established to ensure a consistent definition of SLE for research and surveillance targets. However, their implementation in clinical settings is still a subject of discussion.^{3,7}

Lupus cerebritis is one of the most critical neuropsychiatric SLE (NPSLE) complications that may be presented as seizure, cognitive impairment, or psychosis.

We report a case of 22-year-old female patient who presented with unusual manifestation of SLE as a tonic-clonic seizure, imaging findings were suggestive of lupus cerebritis with positive ANA and Anti-DsDNA antibodies. She was diagnosed as lupus cerebritis and started on corticosteroids, cyclophosphamide and hydroxychloroquine.

***Corresponding Author:** Mayar AL-atawneh, Faculty of Medicine, Hebron University Hebron – West Bank – Palestine, **Tel** : +972 59-228-1384, **Email**: mayaratawneh4@gmail.com

Received: 12-Feb-2025, Manuscript No. JOCC - 4536 ; **Editor Assigned:** 01-Mar-2025 ; **Reviewed:** 18-Mar-2025, QC No. JOCC - 4536 ; **Published:** 20-Mar-2025, **DOI:** 10.52338/jocc.2025.4536

Citation: Mayar AL-atawneh. Case report: lupus cerebritis presenting as a seizure in a patient with systemic lupus erythematosus. Journal of Clinical Cases. 2025 February; 4(1). doi: 10.52338/jocc.2025.4536.

Copyright © 2025 Mayar AL-atawneh. This is an open access article distributed under the Creative Commons Attribution License, which permits unrestricted use, distribution, and reproduction in any medium, provided the original work is properly cited.

CASE PRESENTATION

A 22-year-old female with a known history of SLE was diagnosed 7 years ago. Based on clinical and serological criteria, following the Systemic Lupus International Collaborating Clinics (SLICC), presented with three episodes of generalized tonic-clonic seizures, each episode lasted 3-5 mins and was associated with loss of consciousness, frothing of saliva, and post-ictal confusion lasting 10-15 mins.

A month ago, the patient reported progressive lower limb and periorbital edema, bilateral symmetrical polyarthralgia involving the knees and wrists, increasing fatigue, mood swings, confusion, and sleepiness. Painful oral ulcers were also noted during this period. In addition to her medical history of SLE, the patient had an appendectomy 6 years ago and had an insignificant family history. She did not smoke or use illicit drugs.

She was on hydroxychloroquine and low-dose corticosteroids for disease control; however, she was not adherent to her medications.

During examination, her vitals were: blood pressure 154/95mmHg, pulse 76 beats per minute, temperature 36.8 C°, respiratory rate 16 breaths per minute.

Once the seizure had ceased, the patient appeared reasonable, conscious, and oriented. There was a focal neurological deficit of power 4 out of 5 in all limbs, with no sensory or cerebellar

deficits with negative meningeal signs.

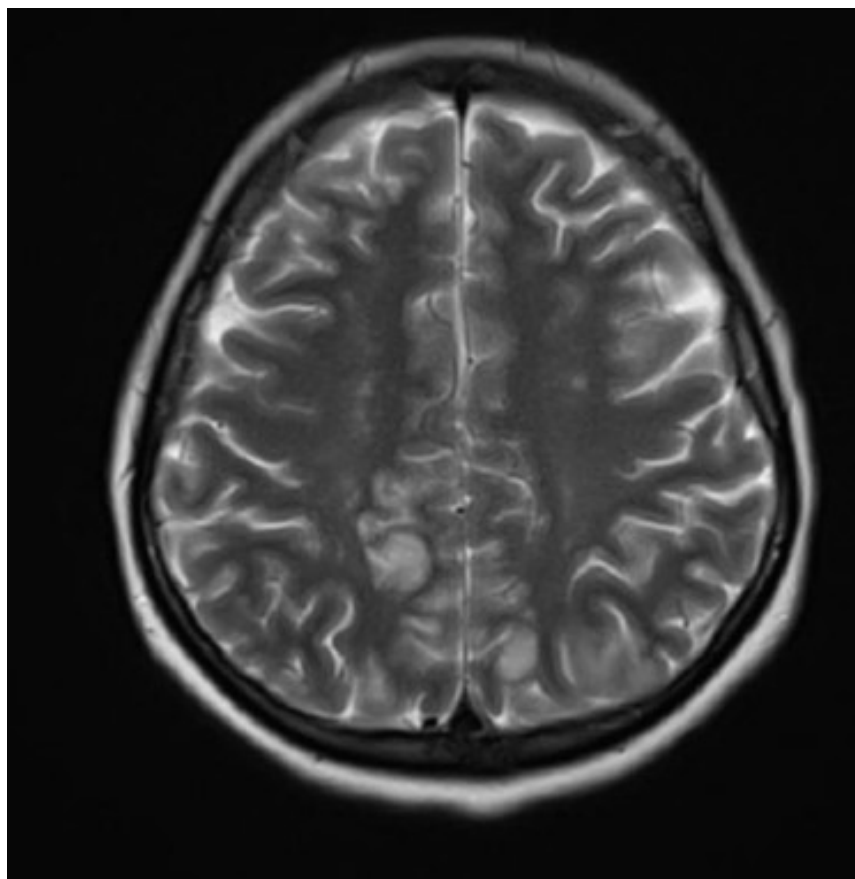
She had two oral ulcers, malar rash, and mild tenderness with no swelling or limitation of movements of the affected joints. Cardiovascular and respiratory examinations were normal.

According to the investigation, a complete blood count revealed normochromic normocytic anemia with hemoglobin of 11.73 g/dl, a low platelet count of 128.4, and a normal total leukocyte count. Elevated D-dimer: 4090, erythrocyte sedimentation rate (ESR) and C-reactive protein (CRP) were normal. Serum albumin was low: 2.3 g/dl, urinalysis showed +1 protein, 52 WBCs, and erythrocytes 70, with elevated creatinine level of 1.54 and liver function test was normal. Serologies for cytomegalovirus (CMV) and Epstein-Barr virus (EBV) were negative. Blood and urine cultures were negative. The patient and her family did not consent to lumbar puncture, so cerebrospinal fluid analysis could not be done.

An autoimmune profile was done, which showed positive ANA and positive Anti-DsDNA antibodies but negative Anti-Phospholipid antibodies with low complement measuring C3 of 54 and C4 of 5.5.

MRI of the brain revealed multiple bilateral T2WI/FLAIR hyperintense signals involving the cortical and subcortical regions of the frontoparietal lobes with lesser extent of the occipital lobe that represent multiple acute and subacute lacunar infarcts correlate with lupus CNS vasculitis (**Figure 1**). MRA and MRV of the brain were unremarkable.

Figure 1: Axial T2-weighted scan of the brain, hyperintense signals involving the cortical and subcortical regions of the frontoparietal lobes with lesser extent of the occipital lobe that represent multiple acute and subacute lacunar infarcts.



Echocardiography was done on the second day of admission and showed dilated cardiomyopathy with an ejection fraction of 30% with severe diffuse hypokinesia.

Abdominal ultrasound (US), the liver is enlarged, measuring approximately 17 cm in the midclavicular line (MCL), but otherwise, the US is unremarkable.

Electroencephalography (EEG) showed active generalized epileptiform waves with slow sharp waves.

After the seizures were aborted with diazepam, she was admitted to the hospital to complete her course of management and initially started on prednisolone, hydroxychloroquine, and mycophenolate.

After discussing the side effects with her family, the patient was given the first dose of cyclophosphamide with improvement of her clinical status and laboratory findings, with a recommended second dose after 2 weeks. She was also given anti-failure treatment of sacubitril/valsartan, Aldactone, bisoprolol, and furosemide after she complained of chest pain and shortness of breath with echocardiography finding of heart failure. With levetiracetam for seizure control. After eight days of admission, she showed a significant improvement and got discharged in accordance to the same plan of treatment and follow-up in the outpatient clinic.

DISCUSSION

Systemic lupus erythematosus is a multi-organ system autoimmune disease with clinical and serological heterogeneity. According to the Systemic Lupus International Collaborating Clinics (SLICC), it indicates that SLE is diagnosed based on fulfilling at least four of the clinical (constitutional, hematological, neuropsychiatric, serosal, musculoskeletal, renal, and mucocutaneous) and immunological (antiphospholipid antibodies, complement proteins, and SLE-specific antibodies) criteria or having lupus nephritis.¹

Since SLE is a multi-systemic disease, it can cause a wide range of symptoms related to any affected body system, one of which is the nervous system which is referred to as Neuropsychiatric SLE (NPSLE). It consists of either central or peripheral neurological and psychiatric manifestations. Those may occur in the early stages of SLE and represent 39%-50% of SLE patients. Any of those manifestations may present either as an initial presentation of the disease or as a flare-up.⁹

Approximately 40% of adult NPSLE symptoms appear either prior to or during the same time of an SLE diagnosis, while 60% emerge within the first year following the diagnosis, and it can be presented in the presence or absence of the active disease.⁸

With the ongoing research, the awareness of medical practitioners about SLE and its multiple presentations has risen, so this helped in the early detection of it.

Given proper management that reflects on improving the

mortality and morbidity of SLE from the 1950s to the 2000s, their overall survival rates witnessed a notable rise, improving from 74.8% to 94.8% for 5-year survival and from 63.2% to 91.4% for 10-year survival.⁶

Meta-regression analysis showed that neuropsychiatric and renal damage adversely influenced overall 5-year survival, with neuropsychiatric damage continuing to have a negative impact on 10-year survival over the past 50 years.

Additionally, the prevalence of neuropsychiatric damage has risen significantly over the last five decades.¹⁰

The variable presentations are based on the site of the areas affected and the extent of involvement¹¹. They can be either focal or diffuse and may range from subtle cognitive dysfunction to acute confusional states. It may include headache, which is the dominant neuropsychiatric manifestation in SLE patients with a prevalence reaching 58% at 10 years of follow-up, the Cerebrovascular events occurring in 3–20% of the patients and generating mortality of up to 15%, and focal or diffuse seizures with a very wide variable prevalence in SLE with a mean of 15%, being more prevalent in juvenile patients than in adults, Patients may have tonic-clonic epileptic seizures (67–88%) or, less frequently, partial simple or complex.

However, based on the American College of Rheumatology (ACR), status epilepticus (SE) and transverse myelitis (TM), remain two of the most widely discussed neuropsychiatric manifestations of SLE, SE and TM had a prevalence of 1-2%.² Other less common manifestations may include movement disorders, psychiatric manifestations: mood disorder, psychosis, anxiety disorder, or other rare neurological manifestations such as peripheral neuropathy and autonomic dysfunction, ocular involvement, posterior reversible encephalopathy syndrome (PRES).²

As it has previously been reported, a case of a patient who had a history of mixed connective tissue disease (MCTD) with SLE features that presented with status epilepticus and acute respiratory failure and needed respiratory support¹², moreover a case reported from Pakistan for a patient presented with generalized tonic-clonic fits with a history of previous other SLE symptoms such as headaches, recurrent painless oral ulcers, arthralgia of small joints of the hand, and intermittent fever.¹³

In our case, which presented as a tonic-clonic seizure, that is attributed to lupus cerebritis as a final diagnosis since she had a systemic lupus erythematosus disease activity index (SLEDAI) score of 40, which is consistent with a severe disease activity after the recommended medical workup done.^{11,14,15}

The diagnostic work-up of these patients should consider all investigations that should be carried out in non-SLE patients presented with the same manifestations¹. Hence, to confirm the diagnosis of our patient, she tested positive for ANA and anti-dsDNA antibodies, indicating an underlying mechanism

consistent with the established pathogenesis of SLE.¹⁶ Additionally, the patient's low serum complement levels (C3 and C4) further support the immunological basis of SLE. These complement levels, typically assessed during the initial workup and for disease monitoring, can markedly decrease secondary to consumption and granular deposition.¹⁷

we have done an MRI, which showed white matter hyperintensities that are nonspecific but according to Magro-Checa et al., those findings correlate to lupus cerebritis.

Moreover, the MRI excluded infection and malignancy. EEG findings also supported the diagnosis by indicating a generalized epileptiform activity, which was reported in 30.8% of patients with lupus cerebritis presenting with seizures.¹⁸ Clinically apparent cardiomyopathy or myocarditis associated with SLE is uncommon; most studies have noted a prevalence of about 10%.^{19,20,21}

A study of Echocardiographic findings in systemic lupus erythematosus found out that patients with the clinical findings of congestive heart failure were corroborated by reduced echocardiographic systolic function.

Reduced left ventricular contractility (in one-half of the patients) was associated with previous myocardial infarction. The other cases of global hypokinesia were likely to happen due to a cardiomyopathic process attributable to SLE, possibly myocarditis since these patients did not have other evidence of ischemic heart disease or myocardial infarction.²⁰

Our patient's echocardiography showed dilated cardiomyopathy, severe hypokinesia, and suspected premyocarditis.

Given the fact that there is a variety in clinical practice of SLE management that depends on disease severity and organic system involvement, it is considered an actual medical challenge.

Treatment in SLE should aim at remission or low disease activity and prevention of flares in all organs, maintained with the lowest possible dose of glucocorticoids.

Flares of SLE can be treated according to the severity of organ involvement by adjusting ongoing therapies (glucocorticoids, immunomodulating agents) to higher doses and switching or adding new therapies.^{22,23} Since then, the treatment of neuropsychiatric lupus has mainly been achieved by glucocorticoids/immunosuppressive agents for manifestations considered to reflect an inflammatory process and antiplatelet/anticoagulants for atherothrombotic/antiphospholipid-related manifestations; our patient started on prednisolone and a first dose of cyclophosphamide without a need of anticoagulation since she had negative anti-phospholipid antibodies, in addition to mycophenolate for her renal involvement.²² However, the side effects of cyclophosphamide, depending on the accumulative dose, range from gastrointestinal upset (nausea, vomiting, anorexia) to infertility, bone marrow suppression, increased

infection risk, and even the risk of malignancies, all of them discussed with the patient before the first dose.²⁴ Our patient was not adherent to her previously prescribed medications mainly hydroxychloroquine, which is the recommended drug of maintenance for all patients with SLE because it prevents flares and is useful in treating fatigue and mucocutaneous and musculoskeletal manifestations while improving long-term survival by protecting against irreversible organ damage, thrombosis, and bone mass loss, that increase the suspicion from the start of the presentation that it could be an SLE flare in the form of cerebritis.²⁵ In the absence of risk factors for retinal toxicity, ophthalmological screening (by visual fields examination and/or spectral domain-optical coherence tomography) should be performed at baseline, after 5 years, and yearly thereafter.^{26,27}

CONCLUSION

We report a case of a rare presentation of lupus cerebritis as a tonic-clonic seizure, which highlights the importance of understanding that autoimmune diseases, such as SLE, can be presented with non-specific symptoms, ranging from mild to severe presentations. Seizures are one of the most frequent and serious neurological manifestations in SLE patients; they can be a symptom of SLE or a sign of some other complications linked to the disease. In general, those patients require regular follow-ups and close monitoring to control the progress of underlying fatal complications.

Consent

Verbal informed consent was obtained from the patient for their anonymized information to be published in this article.

Conflict of interest statement

The authors have declared that there are no conflicts of interest.

REFERENCES

1. Magro-Checa C, Zirkzee EJ, Huizinga TW, Steup-Beekman GM. Management of Neuropsychiatric Systemic Lupus Erythematosus: Current Approaches and Future Perspectives. *Drugs*. 2016 Jan 26;76(4):459-83.
2. Carrión-Barberà I, Salman-Monte TC, Vilchez-Oya F, Monfort J. Neuropsychiatric involvement in systemic lupus erythematosus: A review. *Autoimmunity Reviews*. 2021 Apr;20(4):102780.
3. Petri M, Orbai AM, Alarcón GS, Gordon C, Merrill JT, Fortin PR. Derivation and validation of the Systemic Lupus International Collaborating Clinics classification criteria for systemic lupus erythematosus. *Arthritis*

- & Rheumatism [Internet]. 2012 Jul 27;64(8):2677–86. Available from: <https://dx.doi.org/10.1002%2Fart.34473>
4. Vaillant AAJ, Goyal A, Bansal P, Varacallo M. Systemic Lupus Erythematosus [Internet]. PubMed. Treasure Island (FL): StatPearls Publishing; 2023. Available from: <https://www.ncbi.nlm.nih.gov/books/NBK535405/>
 5. Accapezzato D, Caccavale R, Maria Pia Paroli, Gioia C, Bich Lien Nguyen, Spadea L, et al. Advances in the Pathogenesis and Treatment of Systemic Lupus Erythematosus. International Journal of Molecular Sciences [Internet]. 2023 Mar 31;24(7):6578–8. Available from: <https://www.ncbi.nlm.nih.gov/pmc/articles/PMC10095030/>
 6. Kaul A, Gordon C, Crow MK, Touma Z, Urowitz MB, van Vollenhoven R. Systemic lupus erythematosus. Nature Reviews Disease Primers [Internet]. 2016 Jun 16;2(1). Available from: <https://www.nature.com/articles/nrdp201639>
 7. Aringer M, Petri M. New classification criteria for systemic lupus erythematosus. Current Opinion in Rheumatology. 2020 Sep 9; Publish Ahead of Print.
 8. Popescu A, H. Kao A. Neuropsychiatric Systemic Lupus Erythematosus. Current Neuropharmacology. 2011 Sep 1;9(3):449–57.
 9. Tselios K, Gladman DD, Sheane BJ, Su J, Urowitz M. All-cause, cause-specific and age-specific standardised mortality ratios of patients with systemic lupus erythematosus in Ontario, Canada over 43 years (1971–2013). Annals of the Rheumatic Diseases. 2019 Apr 16;78(6):802–6.
 10. Mak A, Cheung MWL., Chiew HJ, Liu Y, Ho RC. Global Trend of Survival and Damage of Systemic Lupus Erythematosus: Meta-Analysis and Meta-Regression of Observational Studies from the 1950s to 2000s. Seminars in Arthritis and Rheumatism. 2012 Jun;41(6):830–9.
 11. The American College of Rheumatology nomenclature and case definitions for neuropsychiatric lupus syndromes. Arthritis & Rheumatism. 1999 Apr;42(4):599–608.
 12. Leitao AR, Jain MS, Luvsannyam E, Jayswal V, Tiesenga F. Lupus Cerebritis as a Rare Neuropsychiatric Manifestation of Systemic Lupus Erythematosus. Cureus. 2022 May 13;
 13. Ashfaq F, Nauman Ismat Butt, Muhammad Bilal Rasheed, Muhammad, Aniq Anser. Cerebritis as an initial presentation of systemic lupus erythematosus. Anaesthesia, pain & intensive care. 2023 Jul 31;27(4):604–8.
 14. Ruperto N, Hanrahan LM, Alarcón GS, Belmont HM, Brey RL, Brunetta P. International consensus for a definition of disease flare in lupus. Lupus [Internet]. 2011 Apr 1;20(5):453–62. Available from: <https://pubmed.ncbi.nlm.nih.gov/21148601/>
 15. Gladman DD, Ibañez D, Urowitz MB. Systemic lupus erythematosus disease activity index 2000. The Journal of Rheumatology [Internet]. 2002 Feb 1;29(2):288–91. Available from: <https://pubmed.ncbi.nlm.nih.gov/11838846/>
 16. Pisetsky DS. Pathogenesis of Autoimmune Disease. Nature Reviews Nephrology [Internet]. 2023 May 10;19(8):1–16. Available from: <https://www.nature.com/articles/s41581-023-00720-1>
 17. Justiz-Vaillant AA, Gopaul D, Sachin Soodeen, Arozarena-Fundora R, Odette Arozarena Barbosa, Chandrashekar Unakal. Neuropsychiatric Systemic Lupus Erythematosus: Molecules Involved in Its Immunopathogenesis, Clinical Features, and Treatment. Molecules [Internet]. 2024 Feb 6;29(4):747–7. Available from: <https://www.ncbi.nlm.nih.gov/pmc/articles/PMC10892692/>
 18. Mansour H, Habeeb RA, N.O. El-Azizi, Afeefy HH, Nassef MA, Abd AA. Electroencephalography in systemic lupus erythematosus patients with neuropsychiatric manifestations. The Egyptian Journal of Internal Medicine. 2020 Dec 1;32(1).
 19. Harvey AM, Shulman LE, Tumulty PA, Conley CL, Schoenrich EH. Systemic lupus erythematosus: review of the literature and clinical analysis of 138 cases. Medicine [Internet]. 1954 Dec 1;33(4):291–437. Available from: <https://pubmed.ncbi.nlm.nih.gov/13223169/>
 20. ESTES D, CHRISTIAN CL. THE NATURAL HISTORY OF SYSTEMIC LUPUS ERYTHEMATOSUS BY PROSPECTIVE ANALYSIS. Medicine. 1971 Mar;50(2):85–96.
 21. Elías Badu, García-Rubi D, Robles E, Jiménez J, Juan L, Deleze M. Cardiovascular Manifestations in Systemic Lupus Erythematosus. Prospective Study of 100 Patients. Angiology. 1985 Jul 1;36(7):431–41.

22. Fanouriakis A, Kostopoulou M, Alunno A, Aringer M, Bajema I, Boletis JN. 2019 update of the EULAR recommendations for the management of systemic lupus erythematosus. *Annals of the Rheumatic Diseases* [Internet]. 2019 Mar 29;78(6):736–45. Available from: <https://ard.bmj.com/content/78/6/736>
23. Chaichian Y, Weisman MH, Simard JF. Pulse dose steroid experience among hospitalized patients with systemic lupus erythematosus: a single-center feasibility study. *Clinical Rheumatology*. 2021 Feb 19;40(4):1317–20.
24. Dan D, Fischer R, Adler S, Förger F, Villiger P. Cyclophosphamide: As bad as its reputation? Long-term single centre experience of cyclophosphamide side effects in the treatment of systemic autoimmune diseases. *Swiss Medical Weekly*. 2014 Oct 23;
25. Ruiz-Irastorza G, Ramos-Casals M, Brito-Zeron P, Khamashta MA. Clinical efficacy and side effects of antimalarials in systemic lupus erythematosus: a systematic review. *Annals of the Rheumatic Diseases*. 2008 Dec 22;69(01):20–8.
26. Kim JW, Kim YY, Lee H, Park SH, Kim SK, Choe JY. Risk of Retinal Toxicity in Longterm Users of Hydroxychloroquine. *The Journal of Rheumatology*. 2017 Sep 1;44(11):1674–9.
27. Melles RB, Marmor MF. The Risk of Toxic Retinopathy in Patients on Long-term Hydroxychloroquine Therapy. *JAMA Ophthalmology*. 2014 Dec 1;132(12):1453.